



## Join Powelton Neighbors

1960 begins **POWELTON NEIGHBORS** 5th year as a non-profit, non-partisan neighborhood improvement group, open to all tenants or home owners willing to work with a vigorous neighbor's association for community improvement.

The record of **POWELTON NEIGHBORS'** achievements last year rated us a \$1,500 First Prize in the state-wide Pennsylvania Chamber of Commerce Neighborhood Improvement Contest.

1960's HIGHSPOTS INCLUDE:

### **VILLAGE FAIR**



Third annual event brought 1000 young and old together for sidewalk art, exhibits, cake sale, samplings of international food, games, booths; pony rides, Pināta, folk dancing, and band concert.

### **TREE PLANTING COMMITTEE**

Operates through "TREE BANK" membership selling at \$3.00. Anyone who maintains annual membership and who also belongs to **POWELTON NEIGHBORS** is entitled to buy a tree at one half price. Every resident of the Village should join the Tree Bank each year to insure a perpetual, beautiful green tree community.

### **FREE LIBRARY BOOKMOBILE**

stops weekly in the Village as the fruit of months of persuasion by our Neighbors' organization.

## SPRING CLEAN-UP



Combined efforts of the City Sanitation Department, Drexel Fraternity men and our committees in a 4-weeks' coverage of the Village removed over 115 tons of expendable trash, and helped to reduce fire hazards.

## HOME IMPROVEMENT AND ZONING

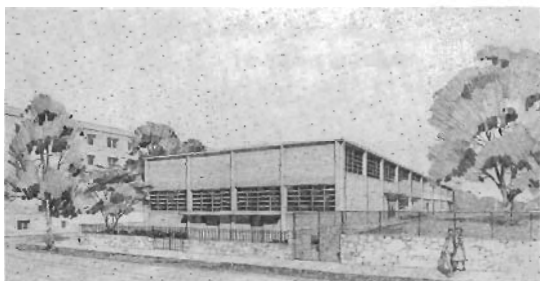


**POWELTON NEIGHBORS** has had a key role in stimulating major improvements in more than 50 homes. Old homes have been completely renewed, standards of maintenance are improving, and a campaign is underway to activate the FHA mortgage plan. The FHA plan for Powelton, which should help owners finance expensive renewals, has the backing of the Greater Phila. Movement, the major banks and the city administration. **POWELTON NEIGHBORS** has a fine record of success in zoning cases and housing code enforcement, which protect the residential quality of the Village.

## **STREET LIGHTING**

was improved in many parts of the Village by the installation of new standards and the replacements of old-type lighting by new.

## **SCHOOLS COMMITTEE**



has worked closely with school officials on the needs of the area. Two years of intensive study and effort bore fruit this year; a fine new elementary school is going up at 36th and Powelton. The Committee is actively involved in planning and advising on landscaping, recreation facilities, and curriculum. It has sponsored a competition among local artists for a decorative mural and is financing this unusual extra feature of the new school. The Committee is continuing its work on school needs at elementary, junior and senior high levels, in cooperation with neighboring civic groups and the West Phila. Corporation. It presents its recommendations to the Bd. of Education at the annual budget hearing.

## **NURSERY SCHOOL**

was started two years ago through the cooperation of the Board of Education with our Schools Committee and of the Crime Prevention Association, which made its West Philadelphia Girls Club available to us four mornings a week. The school serves 30 divided into three and four-year old age groups; has a waiting list.

**MORE CAN BE DONE IN 1960-61 IF YOU WILL HELP YOUR NEIGHBORS IMPROVE AND ENRICH YOUR NEIGHBORHOOD.**

## **RECREATION COMMITTEE**

has organized or encouraged the annual singing City Christmas Concert, Christmas carolling, activities for senior citizens, tot lot, training program volunteer recreation leaders, science club, and seasonal sports activities for boys and girls.

Current weekly activities coordinated by the Recreation Committee are listed later in this pamphlet.

***POWELTON NEIGHBORS** meets on the first Monday of each month at 8 p.m., St. Andrew's Parish Hall, 36th and Pearl Streets. Members receive a monthly newsletter.*



***TO BECOME A POWELTON NEIGHBOR**, send check to Miss Hortense Oudesluys, 3605 Baring Street, Baring 2-4674.*

### **DUES**

*\$ 2.00 for individuals*

*\$ 3.00 for Family membership  
(husband-wife)*

*\$10.00 Contributing Member*

## **Join Powelton Neighbors**

# JOIN NEIGHBORS AT WORK

POWELTON NEIGHBORS achieves results only through the many volunteer hours by individuals, coordinated through committees:

## FAIR

Betsy Acheson  
3515 Hamilton Street EV 2-1240

## HOME IMPROVEMENT

John Marshall  
3508 Hamilton Street EV 2-3326

## HOUSING & ZONING

Nancy Sennott  
106 No. 35th Street EV 2-4159

Hilary Henninger  
3607 Baring Street EV 6-1556

## NEWSLETTER

Kay Tatnall  
3420 Powelton Avenue BA 2-0969

## PLANNING

Conrad Hawk  
302 No. 35th Street EV 2-7213

## RECREATION

Lillian Lopez  
3407 Baring Street EV 6-3835

## SCHOOLS

Annabelle McDaniels  
3311 Hamilton Street BA 2-4860

## SOCIAL SERVICE

Ann Roelofs  
3414 Hamilton Street EV 6-7470

## STREETS

Marguerite Berlinger  
3411 Hamilton Street EV 6-2671

## TREE PLANTING

J. Howard Cooper  
3614 Baring Street EV 2-1483

## WELCOMING & MEMBERSHIP

Emily & Bob Young  
3412 Race Street BA 2-4391

# JOIN NEIGHBORS AT PLAY

Calendar of Current Weekly Activities:

## BOOKMOBILE

Monday—3:30-5:45 p.m.  
38th & Powelton Sts.

## FOLK DANCING

Adults

Wednesday—8:30-10:30 p.m.  
St. Andrews Parish Hall

Children—Thursday

3:15 p.m. ages 4-6, 4 p.m. ages 7-12  
Grace Lutheran Church  
(35th & Spring Garden Sts.)

For Information Call: Lanie Melamed

EV 6-5987

## FUN WITH SCIENCE

Boys & Girls—10 yrs. & up

Monday—7:30 p.m.

Grace Lutheran Church  
(35th & Spring Garden Sts.)

For Information Call: Dr. Frank Pepe

BA 2-3966

## HANDCRAFTS

Tuesday—8:00 p.m.

Homes of Members

For Information Call: Hortense Oudesluis

BA 2-4674

## LEAGUE OF WOMEN VOTERS

2nd Thursday—8:30 p.m.

Homes of Members

For Information Call: Jane Engates

EV 2-6986

## NURSERY SCHOOL

3-4 year olds

Monday, Tuesday, Thursday & Friday

9:00-11:45 a.m.

West Philadelphia Girls Club  
(3512 Haverford Ave.)

For Information Call: Patricia Ball

BA 2-4038

## TOT LOT

Located Behind Metropolitan

Baptist Parish House, 35th & Baring Sts.

For Information Call: Betsy Van Camp

EV 2-1629

## TRI POW-NEI

Sports for Boys & Girls over 8

Saturday a.m.

For Information Call: Whitman Burress

EV 6-9933

